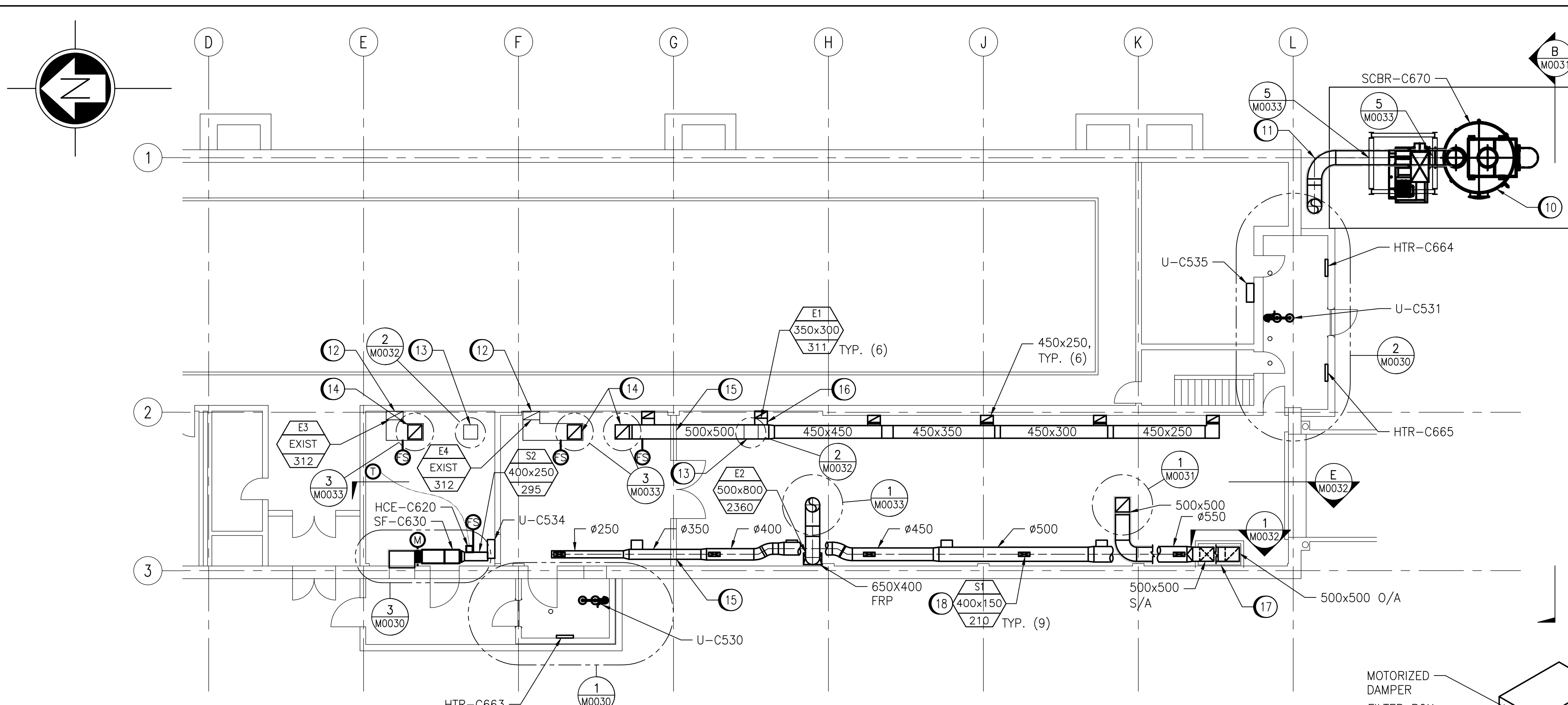


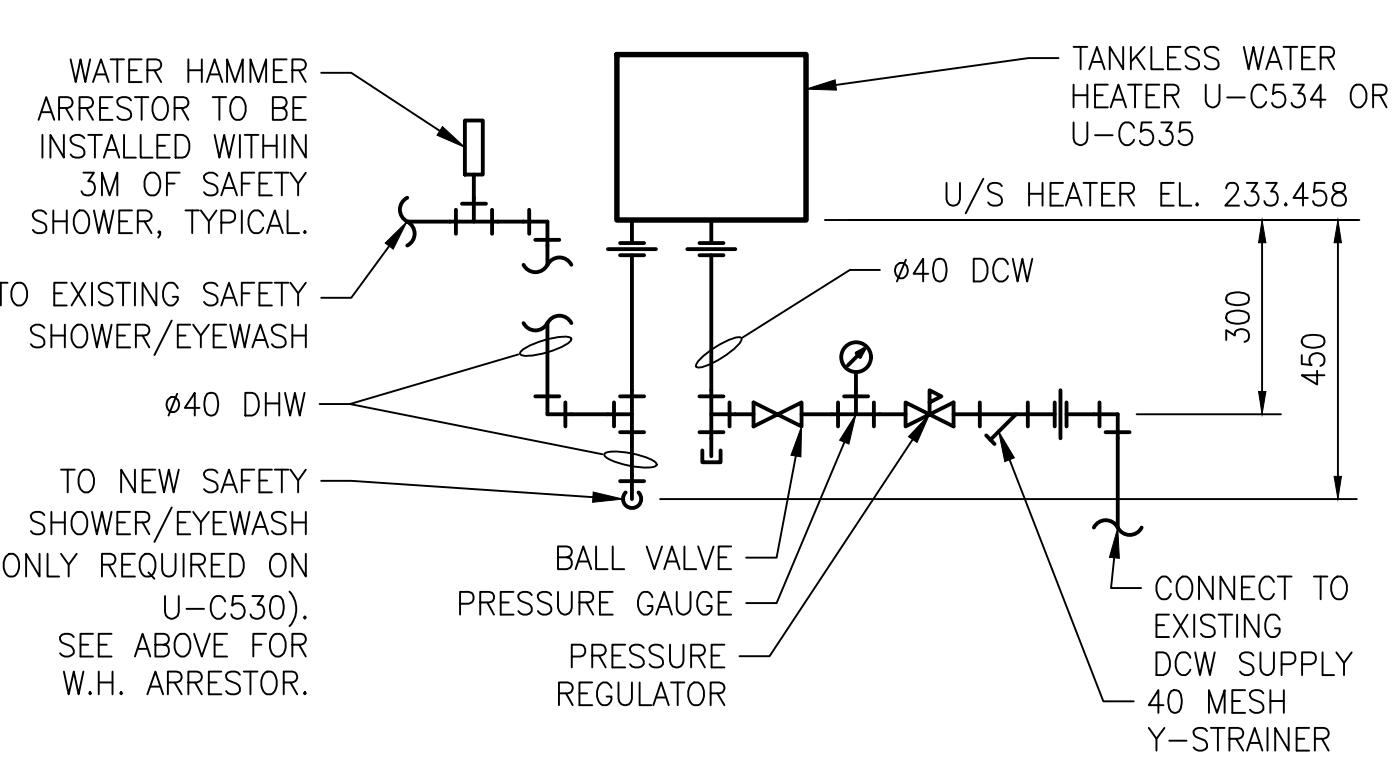
LAST SAVE: 2025/04/23 - 10:51am
PATH: \\WINPDC1.slbz\PROJ\15\GEN\45MEC\DD - General DWG\MacCLEAN\1-0630M-M00XX-001-PD.dwg
A1 SIZE - 594mm x 841mm



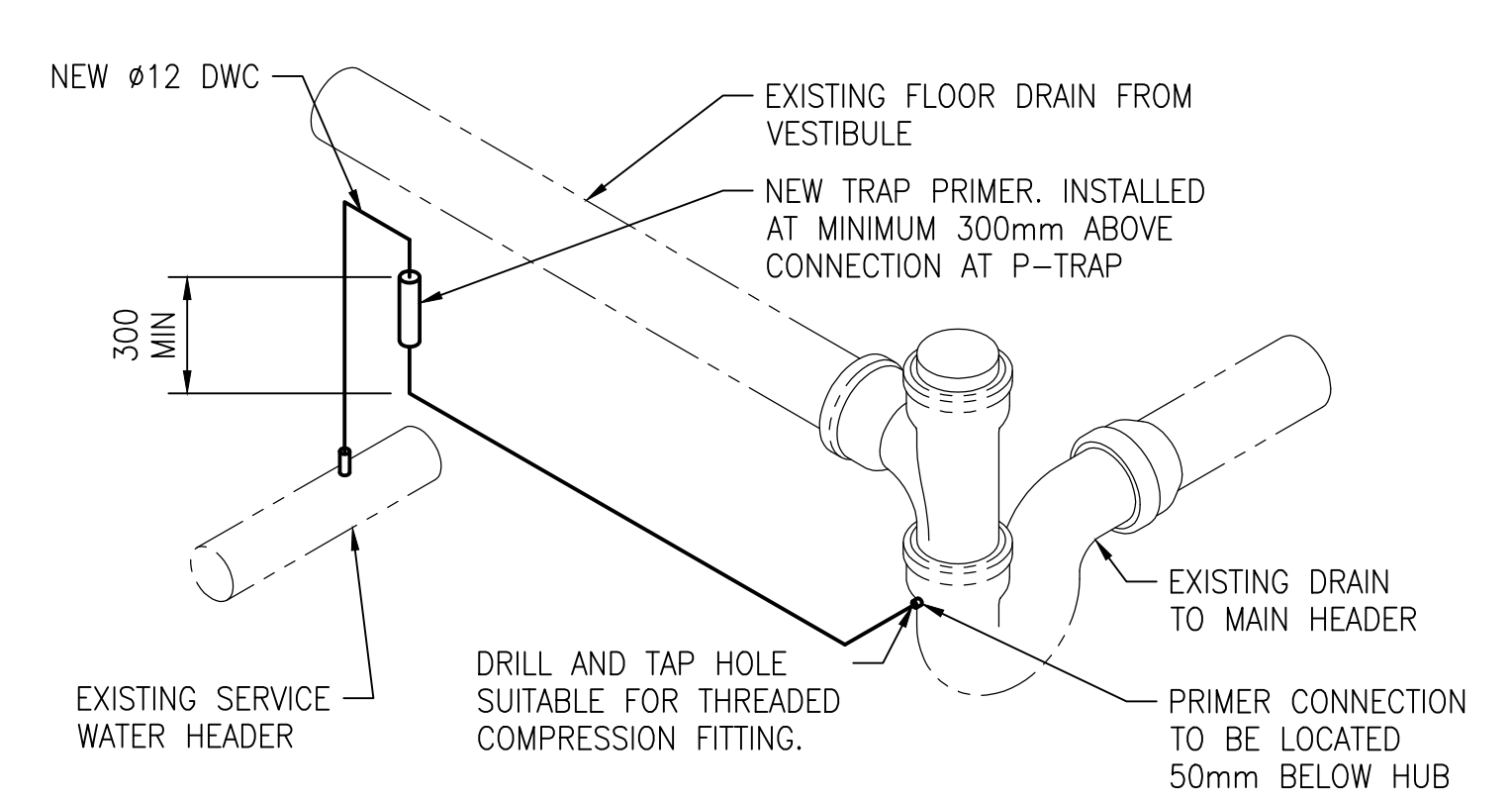
PARTIAL MAIN PLAN - NEW WORK
SCALE: 1:100

DRAWING NOTES

- EXISTING FLOOR DRAIN TO REMAIN. PIPES TO BE FLUSHED AND CLEARED OF DIRT AND DEBRIS. REFER TO TYPICAL TRAP PRIMER INSTALLATION FOR EXISTING FLOOR DRAINS.
- EXISTING DCW TIE POINT. NEW PIPING TO BE CONNECTED AT THIS LOCATION.
- EXISTING SAFETY SHOWER/EYEWASH TO REMAIN. NEW $\phi 40$ DHW PIPING TO BE CONNECTED TO EYEWASH/SAFETY SHOWER.
- NEW EYE WASH/SAFETY SHOWER COMBINATION UNIT TO BE SUPPLIED AND INSTALLED. CONNECT NEW $\phi 40$ DHW TO SHOWER.
- NEW SURFACE MOUNTED FORCED FLOW HEATER TO BE INSTALLED. COORDINATE WITH ELECTRICAL.
- SUPPLY AND INSTALL NEW INSTANTANEOUS WATER HEATER. REFER TO DETAIL FOR TYPICAL PIPING.
- NEW $\phi 40$ DHW PIPED TO NEW SAFETY SHOWER/EYEWASH.
- NEW $\phi 40$ DCW PIPED TO NEW TANKLESS WATER HEATER.
- NEW $\phi 40$ FROM BELOW. CONNECT TO EXISTING $\phi 80$ SERVICE WATER HEADER IN GENERATOR ROOM.
- INSTALL SCRUBBER, SCBR-C670, ON NEW CONCRETE PAD. COORDINATE WITH STRUCTURAL AND ELECTRICAL.
- NEW INSULATED $\phi 500$ FRP DUCT.
- REUSE EXISTING DUCT AND EXHAUST GRILLE. BALANCE AIR VOLUME AS NOTED.
- REFER TO DETAIL 2/M0032 FOR ROOF CURB CLOSURE.
- REFER TO DETAIL 3/M0033 FOR NEW FAN AND EXHAUST DUCT INSTALLATION.
- COORDINATE WITH STRUCTURAL FOR DUCT PENETRATION THROUGH EXISTING CONCRETE BLOCK WALL.
- SUPPLY AND INSTALL 450x200 EXHAUST DUCT. DUCT TO BE INSTALLED DOWN TO LOW LEVEL. SUPPLY EXHAUST GRILL E1 AND BALANCE AS NOTED.
- DUCT PENETRATIONS AT FLOOR LEVEL TO BE FIRE STOPPED AND MADE AIR TIGHT. REFER TO DETAIL 1/M0031.
- SUPPLY VOLUME NOTED IS FOR EMERGENCY OPERATION. OCCUPIED OPERATION VOLUME TO BE 198 L/S AND EMERGENCY OPERATION 0 L/S.



TANKLESS WATER HEATER - PIPING DETAIL
SCALE: NTS

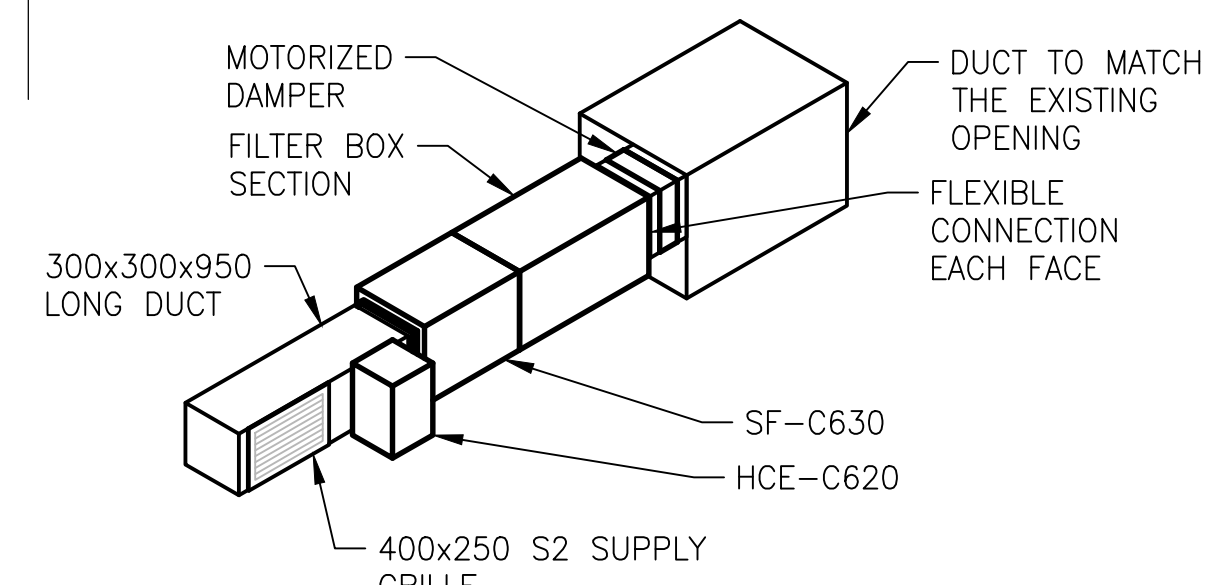


TYPICAL TRAP PRIMER INSTALATION
SCALE: NTS

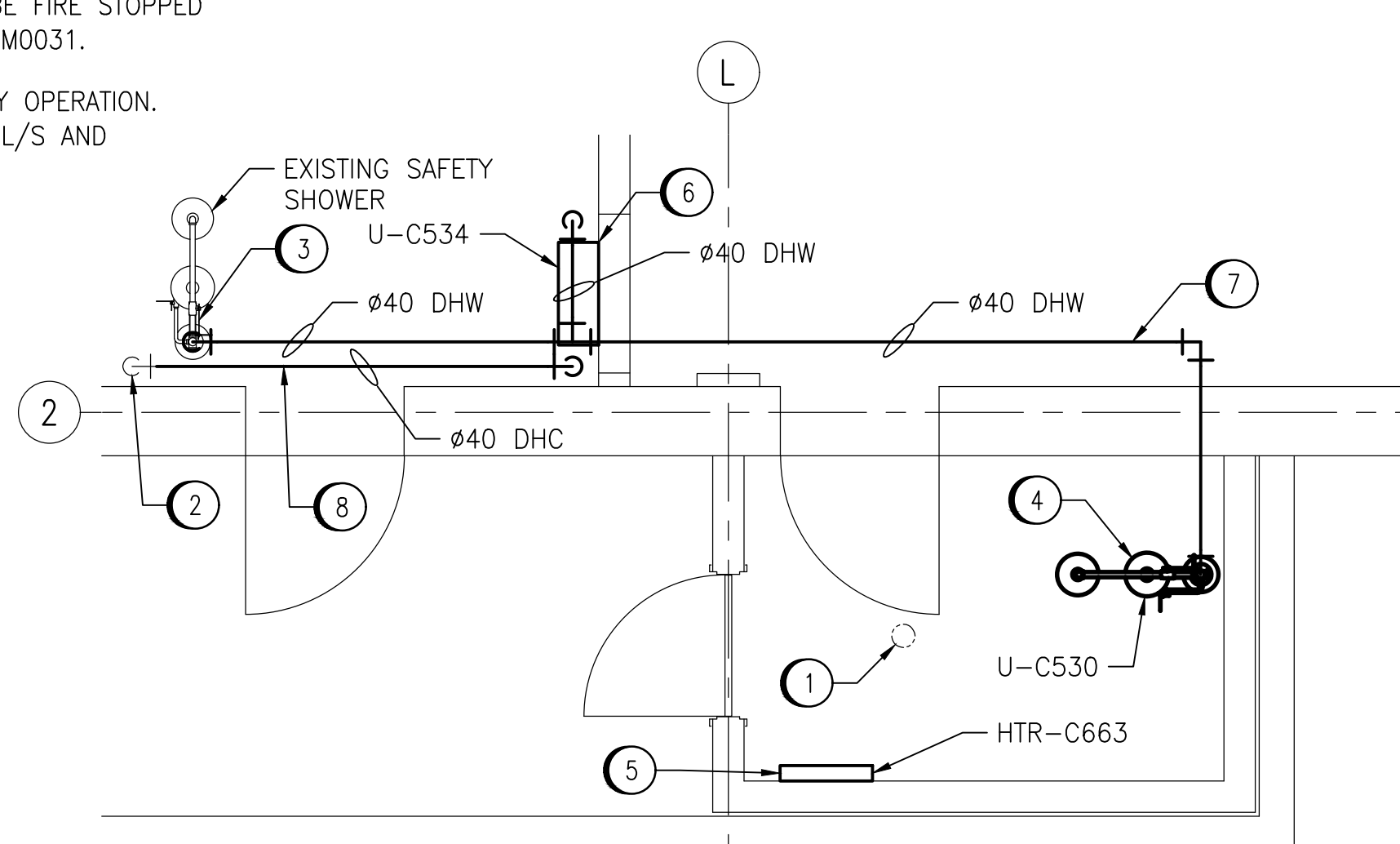
DESIGN CRITERIA:

THE BUILDING ENVIRONMENTAL HEATING SYSTEMS SHOWN ON THESE DRAWINGS HAS BEEN DESIGNED TO THE REQUIREMENTS OF THE MANITOBA BUILDING CODE AND VENTILATED AT A MINIMUM OF 5.5 AIR CHANGES PER HOUR (ACH) WHILE OCCUPIED. MORE SPECIFICALLY AS FOLLOWS:

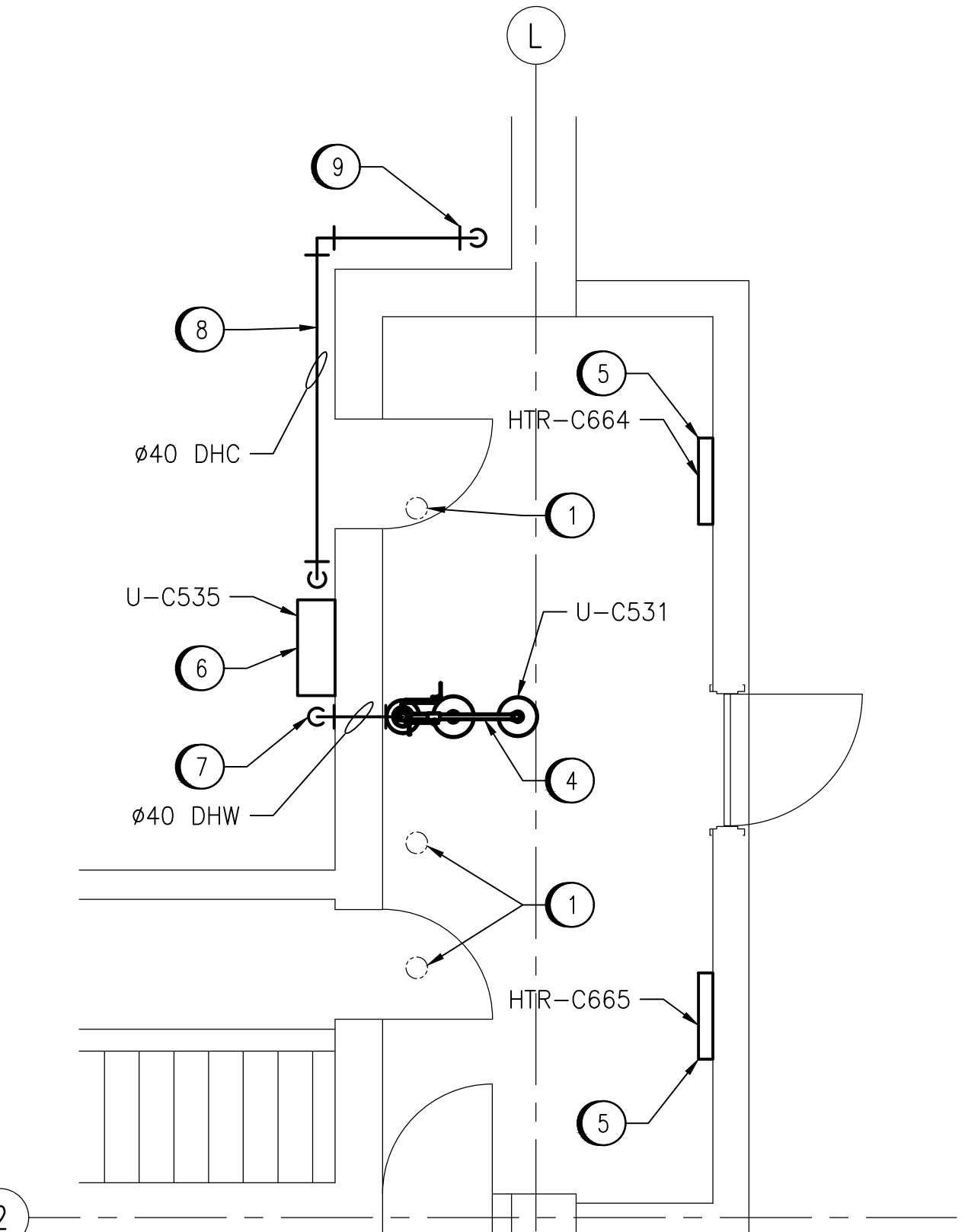
- OUTDOOR CONDITIONS OF -33°C IN WINTER.
- INDOOR CONDITIONS OF 21°C IN WINTER.



EQUIPMENT ROOM SUPPLY FAN
SCALE: NTS



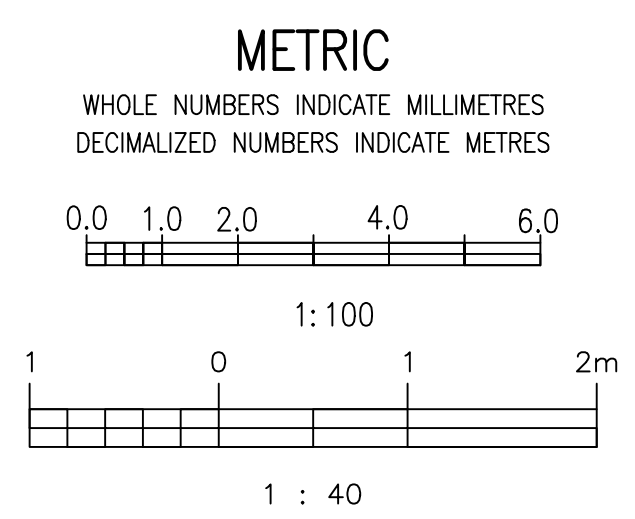
VESTIBULE PARTIAL FLOOR PLAN - NEW WORK
SCALE: 1:40



VESTIBULE PARTIAL FLOOR PLAN - NEW WORK
SCALE: 1:40

GENERAL NOTES

- DRAWING INFORMATION BASED ON HISTORICAL DRAWING AND SITE INVESTIGATIONS.
- INSULATION ON ALL EXISTING DOMESTIC WATER, FRESH AIR INTAKE, RAIN WATER LEADER, CONDENSATE AND DRAIN PIPE FITTINGS MAY CONTAIN ASBESTOS MATERIALS.
- MASONRY BLOCK WALLS, CEILING OR WALL HARD PLASTERS AND CERAMIC FLOOR TILES MAY CONTAIN ASBESTOS.
- FLOW SWITCHES SUPPLIED AND INSTALL BY ELECTRICAL CONTRACTOR.
- BALANCE SUPPLY AND EXHAUST DAMPERS TO VOLUMES NOTED.

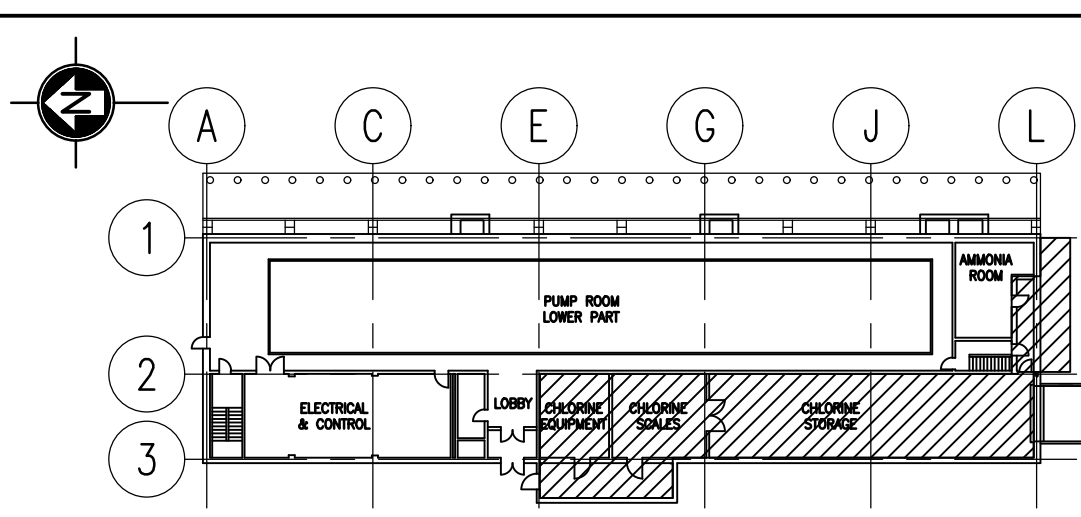


KEY PLAN

SCALE: 1:500

LEGEND

	EXISTING EQUIPMENT
	EXISTING DUCTWORK
	NEW EQUIPMENT
	NEW DUCTWORK
	INSULATED DUCTWORK
	EXISTING DRAINAGE PIPING
	NEW PIPING
	NEW ELECTRICAL HEATER
	MOTORIZED DAMPER
	BACK DRAFT DAMPER
	FIRE DAMPER
	FLOW SWITCH
	DIFFUSER/GRILLE
	TYPE
	SIZE
	VOLUME



AtkinsRéalis 148 Nature Park Way, Winnipeg, Manitoba Canada R3P 0X7		THE CITY OF WINNIPEG WATER AND WASTE DEPARTMENT	
DESIGNED BY: T. SHAW	CHECKED BY: S. NORSWORTHY	MACLEAN PUMPING STATION CHLORINE SYSTEM UPGRADE MECHANICAL NEW WORK MEZZANINE, MAIN FLOOR PLANS AND DETAILS	
DRAWN BY: M. CAUDINO	APPROVED BY: S. NORSWORTHY		
SCALE: AS NOTED	ISSUED FOR CONSTRUCTION BY: M. SKINNER		
DATE: 2023-03-06	DATE: 2025/04/30	CITY DRAWING NUMBER 1-0630M-M0030	
CONSULTANT NO.: 694715-2000-450D-1002		SHEET 001	
NO. REVISIONS		REV. SIZE 00 A1	